

Eugene James Martin

Eugene James Martin (Washington, DC, 1938 - Lafayette, Louisiana, 2005) is best known for his imaginative, complex mixed media collages on paper, his often gently humorous pencil and pen and ink drawings, and his paintings on paper and canvas that may incorporate whimsical allusions to animal, machine and structural imagery among areas of "pure", constructed, biomorphic, or disciplined lyrical abstraction. Martin called many of his works straddling both abstraction and representation "satirical abstracts". After attending the Corcoran School of Art from 1960–1963, Eugene James Martin became a painter considering artistic integrity his only guide. He did not adhere to any particular school or art movement, remaining an individualist throughout his life. Martin's works of art can be found in numerous private art collections throughout the world, and are included in the permanent collection of many Museums, including the **High Museum of Art** in Atlanta, Georgia; the **Ogden Museum of Southern Art** in New Orleans, Louisiana; the **Stowitts Museum and Library** in Pacific Grove, California; the **Schomburg Center for Research in Black Culture**, New York; the **Paul R. Jones Collection of African American Art** at the University of Delaware; the **Sheldon Museum of Art** in Lincoln, Nebraska; the **Ohr-O'Keefe Museum of Art** in Biloxi, Mississippi; and the **Munich Museum of Modern Art** in Munich, Germany.

right:

the artist in his studio,
Washington, DC, 1988





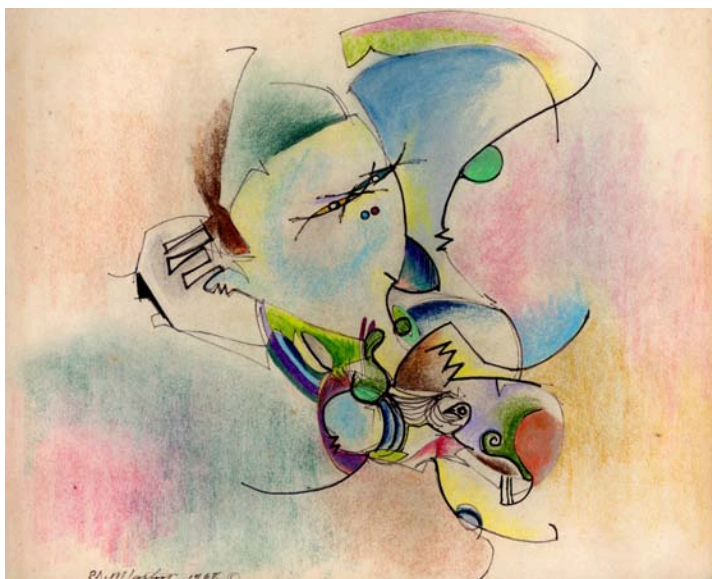
Untitled

1968
colored pencil, ink, and marker on paper
ca. 6.5 by 9 in.



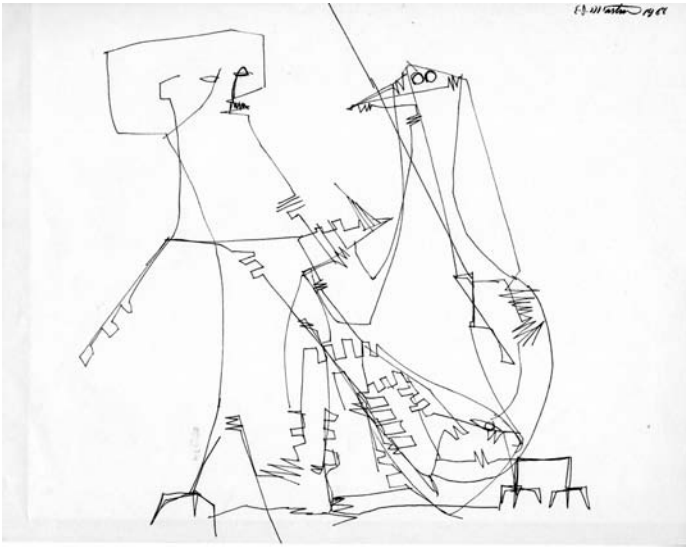
Untitled

n.d. (ca. 1968)
graphite, ink, and colored pencil on paper
ca. 8.5 by 6.25 in.



Creative Juices

1968
colored pencil, graphite, and ink on paper
ca. 7.75 by 9.75 in.



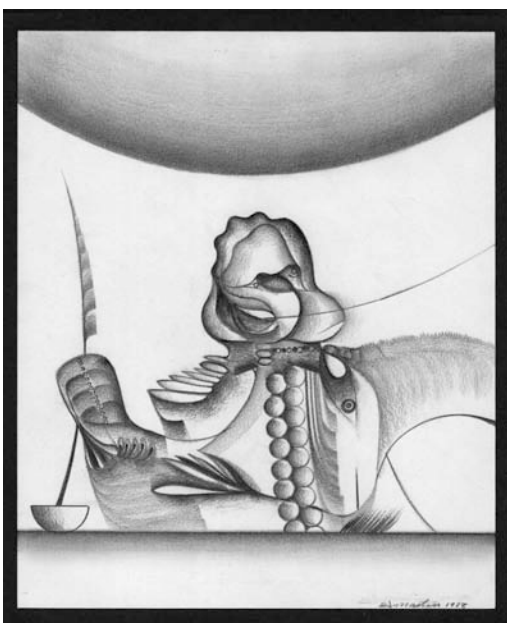
Untitled

1968
black marker on paper
ca. 8.5 by 11 in.



Untitled

1975
pencil and black marker on paper
ca. 11 by 8.5 in.



Untitled

1978
graphite on paper
ca. 9.5 by 8 in.



Human Sponge

1979
bamboo reed pen and ink on paper
ca. 10.5 by 8 in.



Untitled

1981
bamboo reed pen and ink on paper
each ca. 9.5 by 7 in.



In bondage

1981
bamboo reed pen and ink on paper
ca. 9 by 7 in.



Untitled

1981
graphite, bamboo reed pen and ink on paper
ca. 10.25 by 8 in.



Untitled

1981
bamboo reed pen and ink on paper
ca. 9.75 by 7 in.



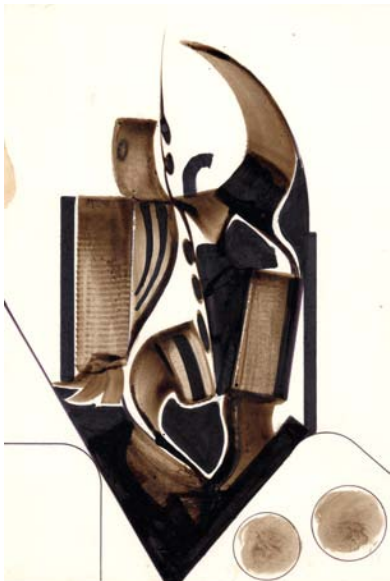
Untitled

1981
bamboo reed pen and ink on paper
ca. 10 by 7 in.



Untitled

1981
bamboo reed pen and ink on paper
each ca. 8 by 7 in.



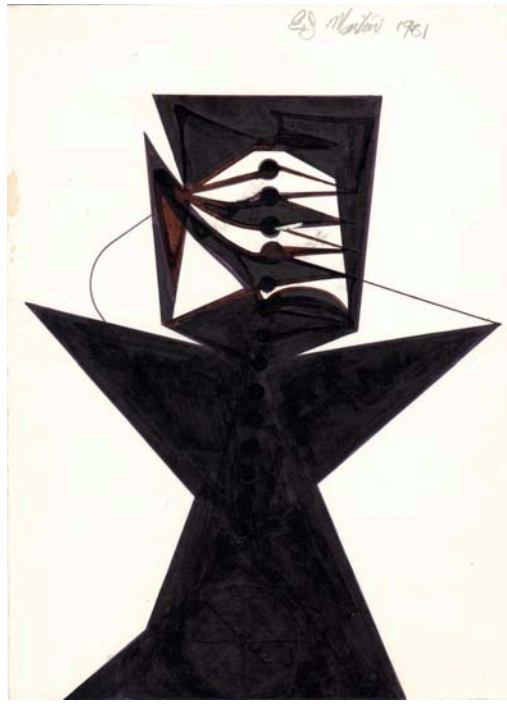
Untitled

1981
bamboo reed pen and ink on paper
each ca. 9.5 by 6.5 in.



Untitled

1981
bamboo reed pen
and ink on paper
each ca. 9.5 by 7 in.



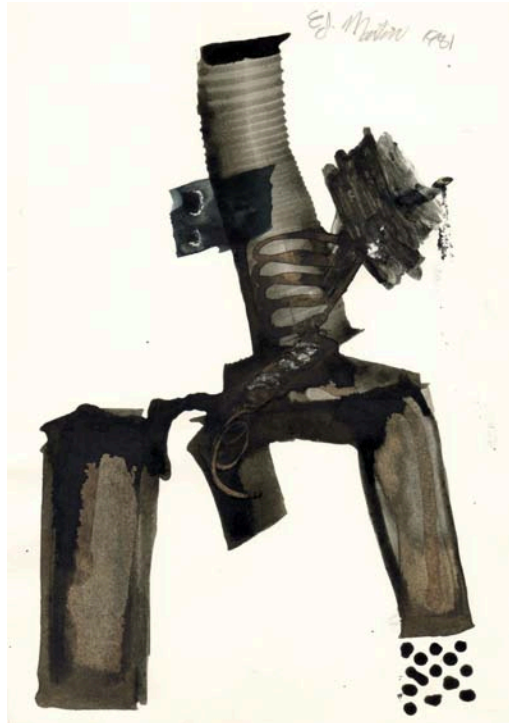
Untitled

1981
bamboo reed pen
and ink on paper
each ca. 9.75 by 7 in.



Untitled

1981
bamboo reed pen
and ink on paper
each ca. 9.5 by 7 in.



Untitled

1981
bamboo reed pen
and ink on paper
each ca. 9.75 by 8 in.



Untitled

1986
graphite, pen, and ink on paper
each ca. 14 by 10.75 in.



Early Bird Gets The Worm

1988
pastel, graphite, colored pencil, pen,
and ink on paper
each ca. 13.25 by 10.25 in.